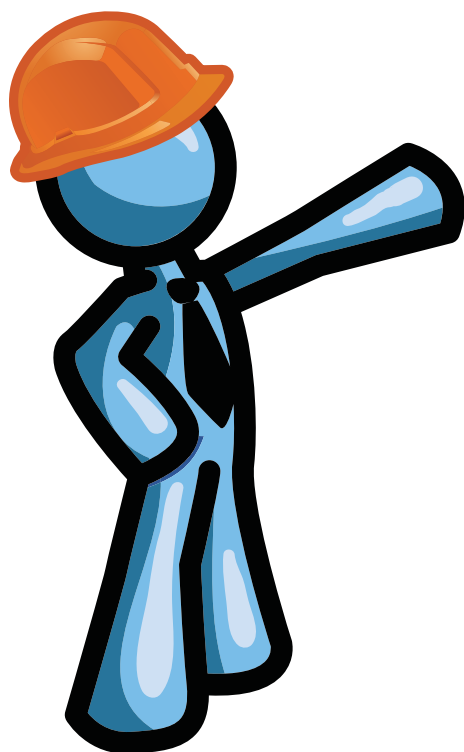
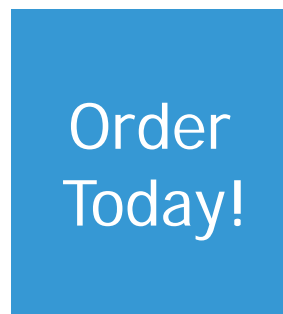
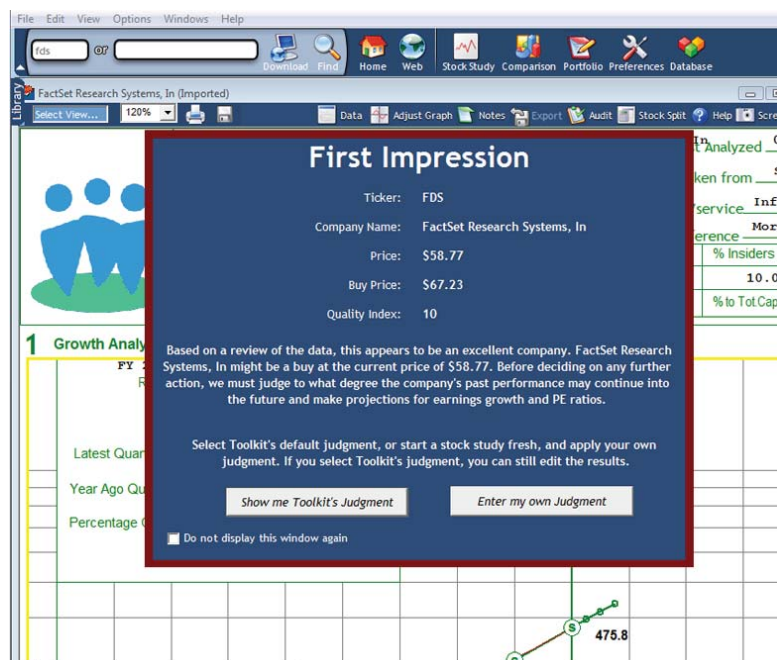


Toolkit 6 for Windows

Turbocharge Your Portfolio with Powerful Stock Analysis Tools.



Want to make smarter stock investing decisions?
Check out all that Toolkit 6 has to offer:

- Instantly weed out unlikely candidates using preliminary judgment with the new "First Impression" screen.
- Develop your model of a stock's Likely future performance, current valuation, and optimal buy price.
- Download and update ten years of history using Morningstar data from StockCentral.com or BetterInvesting. (Subscription required.)
- Get early warning alerts from Toolkit 6's unique portfolio management system for companies that are potentially over-priced or experiencing troubles.
- Utilize "default judgment" to instantly complete a study of any stock.
- Compare growth of free cash flow to earnings per share, revenues, and other data series.
- Display and print reports of portfolio diversification and fundamental performance.

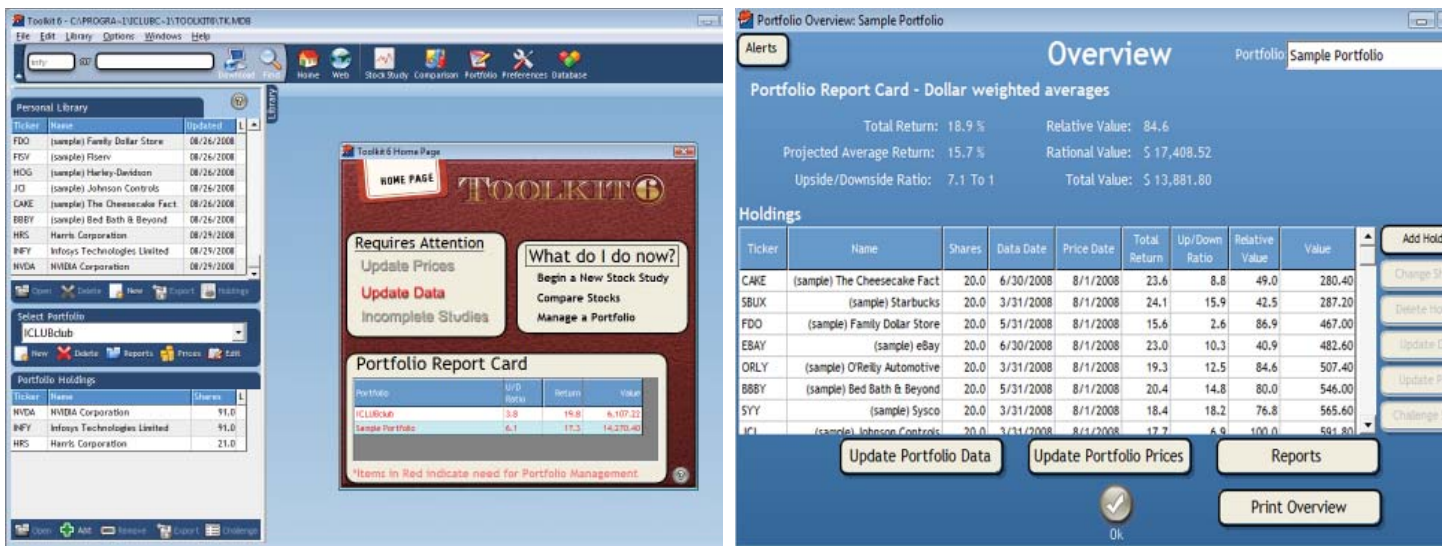
Toolkit 6 Pricing

Full Version.....\$179.99

StockCentral/BetterInvesting Members.....\$169.99

Printed Manual.....\$27.89

Investment clubs: Contact us for special group sale pricing on purchases of five or more copies!



What's New in Version 6:

- Displays preliminary judgment for any stock using a "First Impression" screen, helping you to instantly weed out unlikely candidates.
- Graph additional historical data points including dividends, net income, and book value.
- Graph analyst estimates to aid future projections.
- Display and print revenue-based EPS estimates on history graph.
- Choose to use average P/E Ratios from the last 5 or 10 years by default when estimating future prices.
- Share stock studies and discuss conclusions with investors in the StockCentral community, right within Toolkit 6. (Subscription required.)
- Identify potential stocks to study using the regularly-updated Roster of Quality Companies listing, downloaded automatically directly into the program. (StockCentral subscription required.)
- *And much more!*

Technical Specifications

CPU: 1 Ghz Processor • Memory: 256 MB RAM • Hard Disk Space: 20 MB Free • Operating System: Windows XP or Vista (32-bit) • Monitor Resolution: 1024x768 • Disk Drive: CD-ROM drive • Internet Access

